

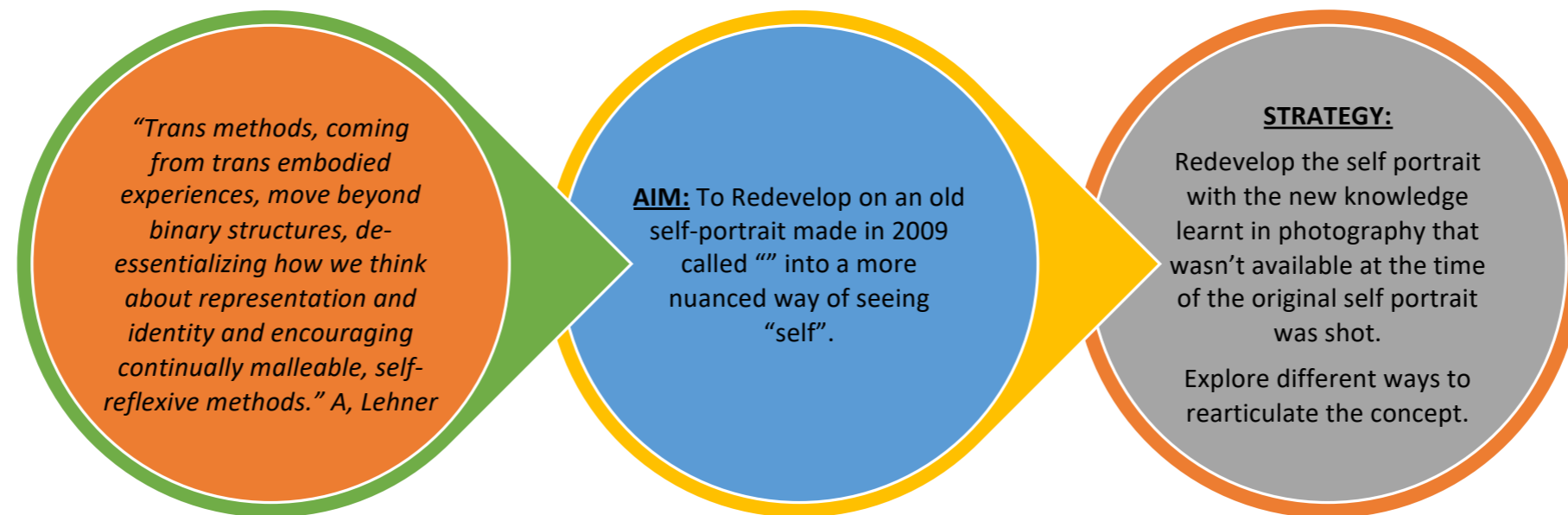


WORKFLOW

Digital Imaging - Semester 1 - 2023

By Ethan Kristy

Beyond Representation: Trans Embodied Methodologies: Self Reflective Methods – “Self” as a “feeling”. (A, Lehner 2022)

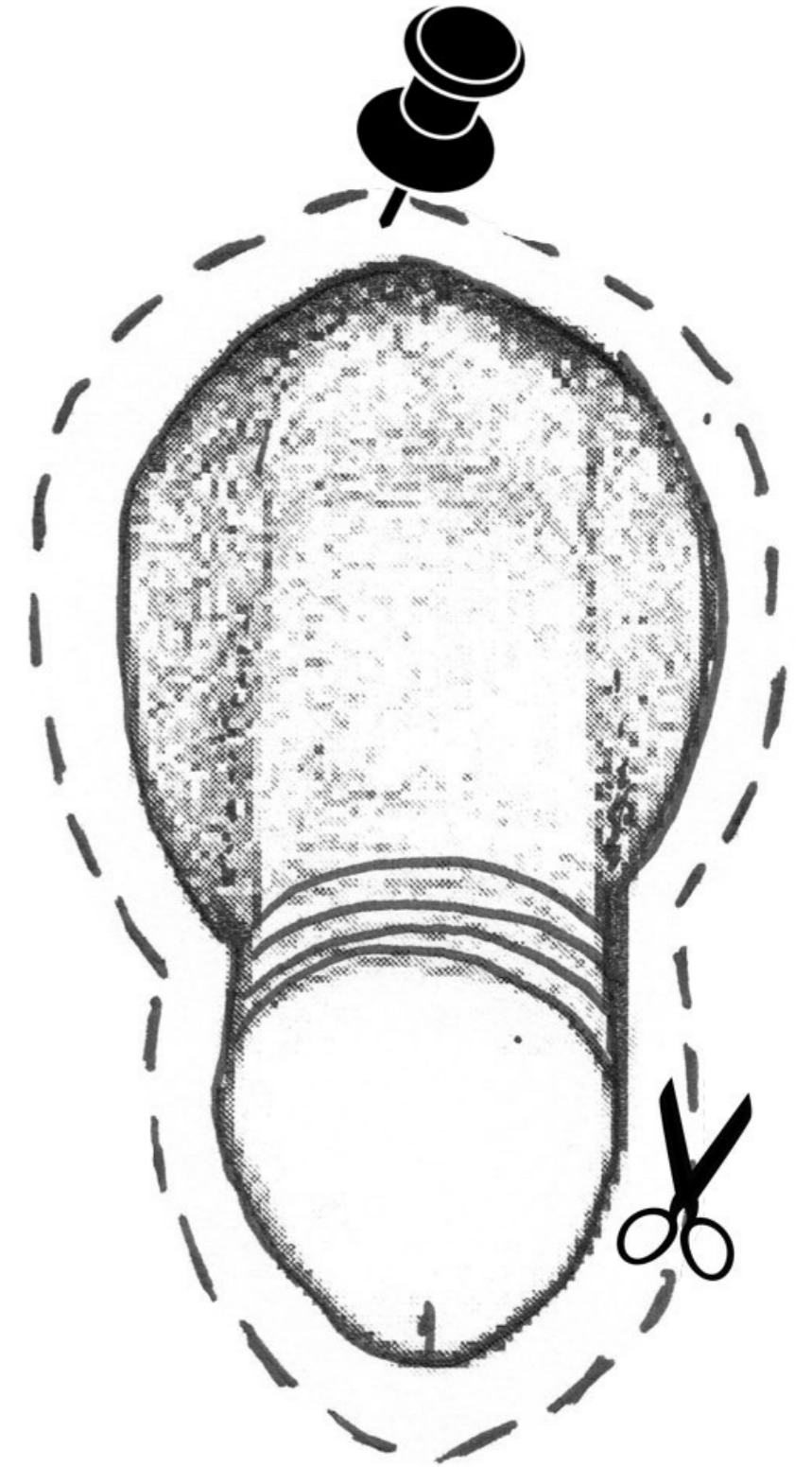


Andy
Warhol –
“Shadows”
1978–79



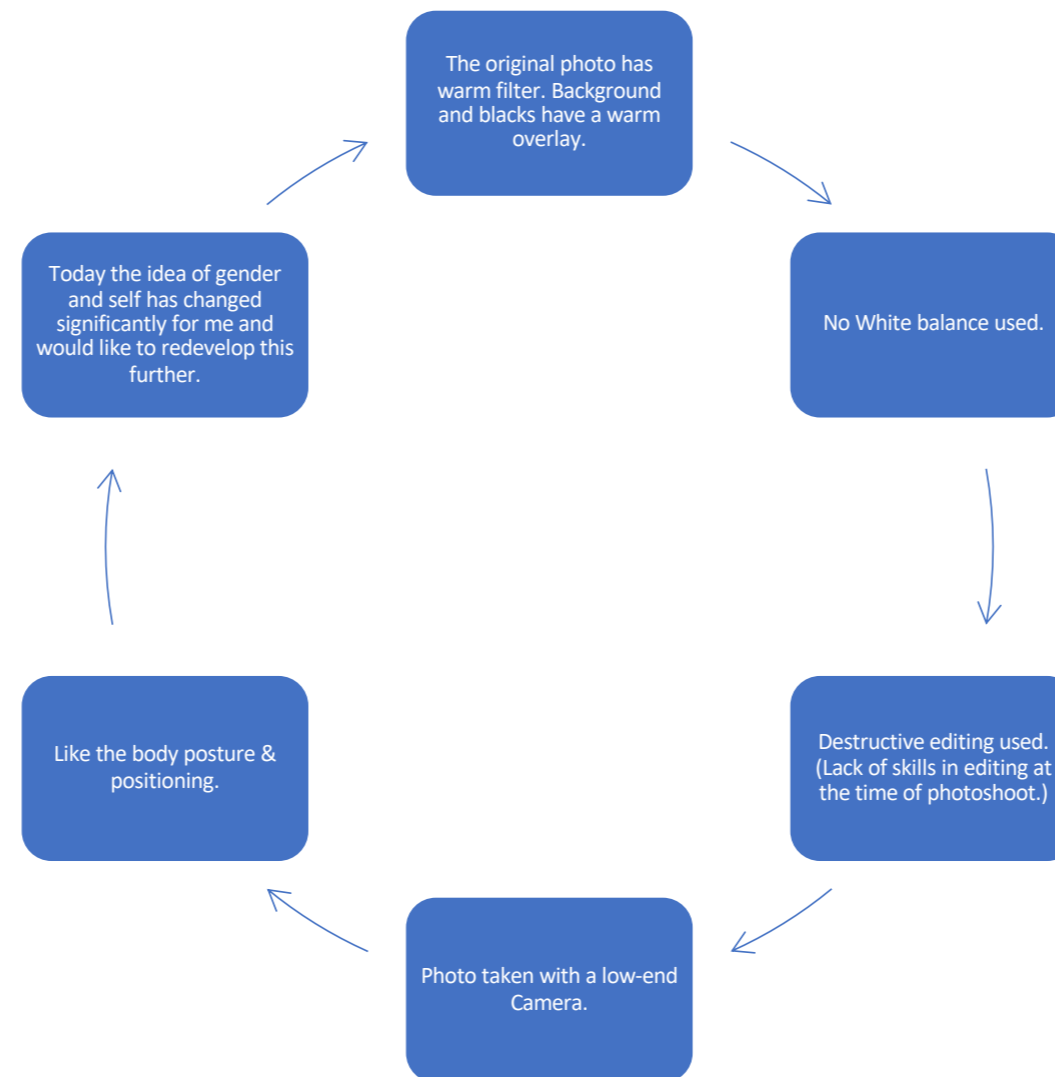
ORIGINAL
SELF-
PORTRAIT

"Penis Cut Out", 2009

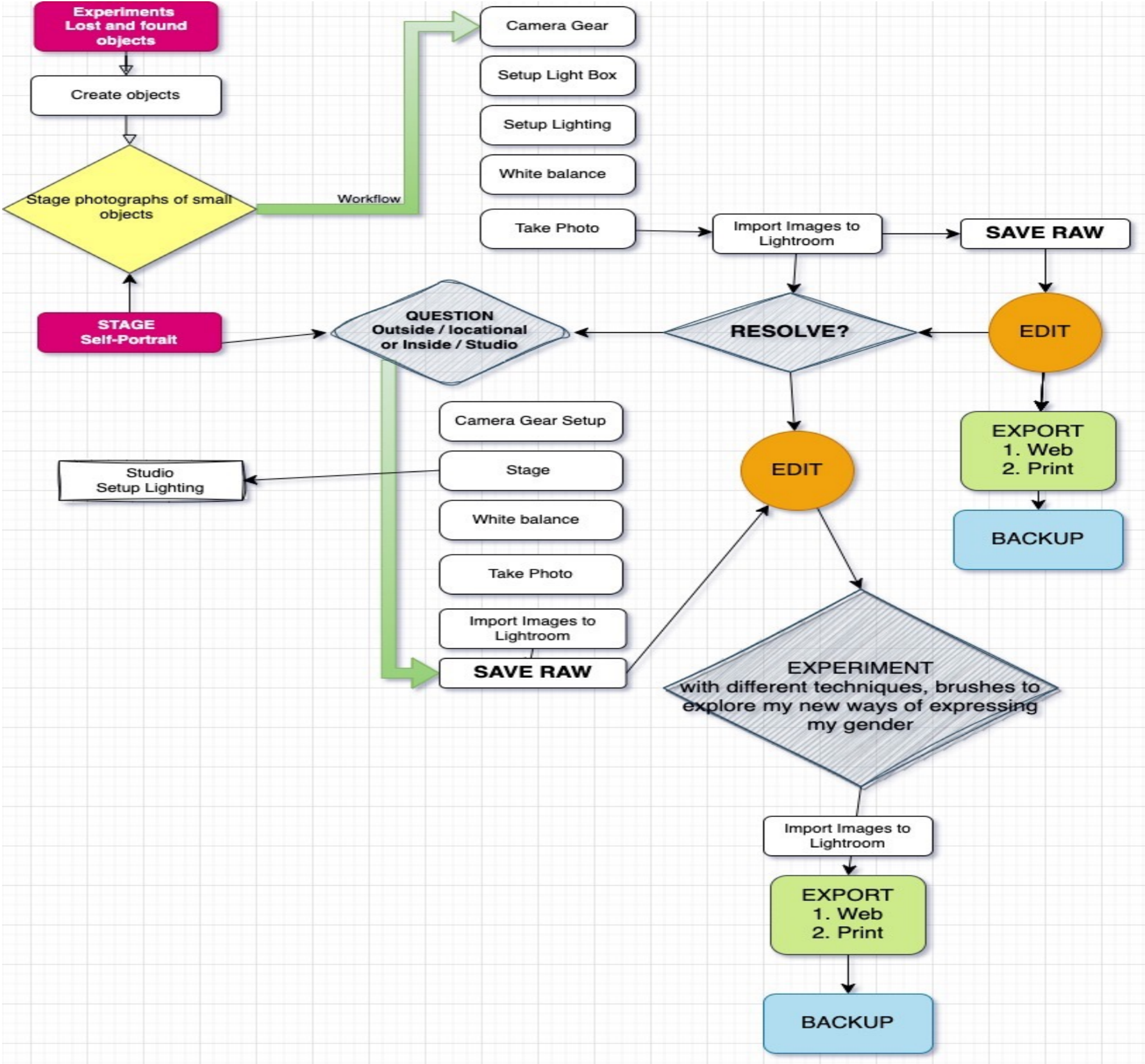


ORIGINAL SELF-PORTRAIT

Likes + (Dis)likes



WORKFLOW





LOST & FOUND

- A series of photos taken of the lost and found of objects in the flood. "Objects of Masculinities"
- The aim is to explore the fundamentals of lighting and staging on a smaller scale. Configuring lighting, equipment and testing donated camera, before restaging the self-portrait.
- Experiment with different lighting and colour.

EQUIPEMENT

- Photo Light Box
- Tripod
- Camera
- Colour Checker



REFERENCE LIST

REFERENCE

Halberstam, J. (2018) *Trans*: A quick and quirky account of gender variability*. Oakland, CA: University of California Press.

Lehner, A. (2022) *Beyond representation: Trans embodied methodologies, Dilettante Army*. Available at: <https://dilettantearmy.com/articles/beyond-representation> (Accessed: 24 May 2023).

Lehner, A. (2019) 'Trans self-imaging praxis, decolonizing photography, and the work of Alok Vaid-Menon', *Refract: An Open Access Visual Studies Journal*, 2(1). doi:10.5070/r72145857.

Lehner, A. (2016) 'From self-portrait to Selfie: Contemporary art and self-representation in the social media age', *Self-Representation in an Expanded Field* [Preprint]. doi:10.3390/books978-3-03897-565-6-12.

IMAGES

Warhol, A. (1978-79) 'Shadows'. Dia Art Foundation.
<https://www.diaart.org/collection/collection/warhol-andy-shadows-197879-1980-520-1-102>